



Paulmann

IP 20



Info

www.paulmann.com

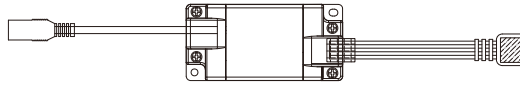
Paulmann Licht GmbH
Quezinger Feld 2
31832 Springe
Germany

www.paulmann.com

Art.-Nr.:

500.03

PKE 08/17



1X



1X

MaxLED 500/MaxLED 1000

✗

MaxLED Tunable White

✓

MaxLED RGBW

✗

A

MaxLED 500/MaxLED 1000

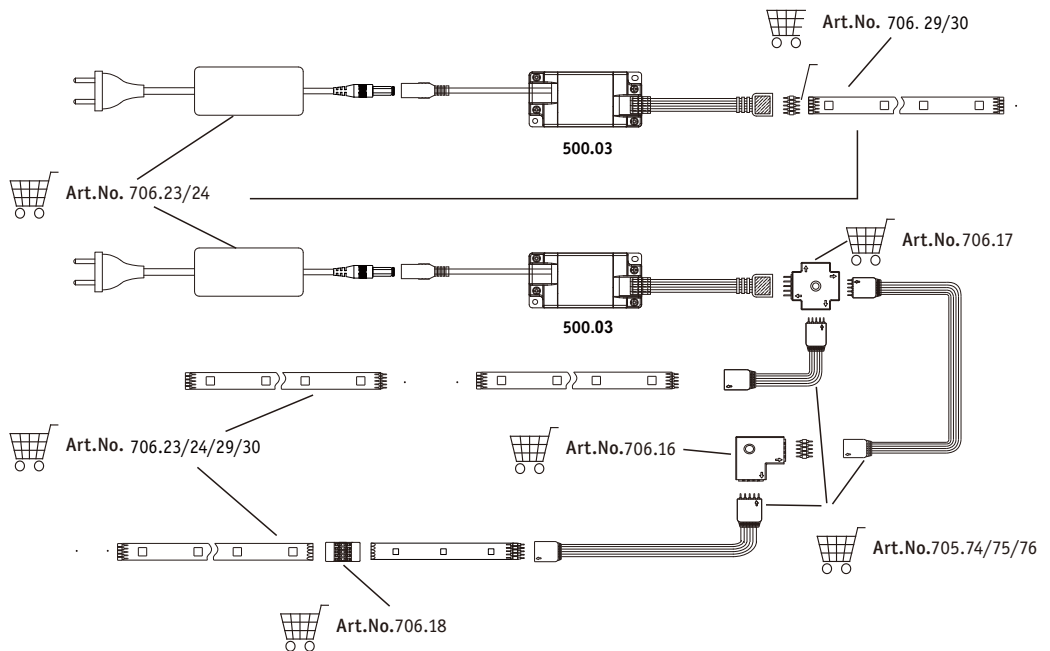
✗

MaxLED Tunable White

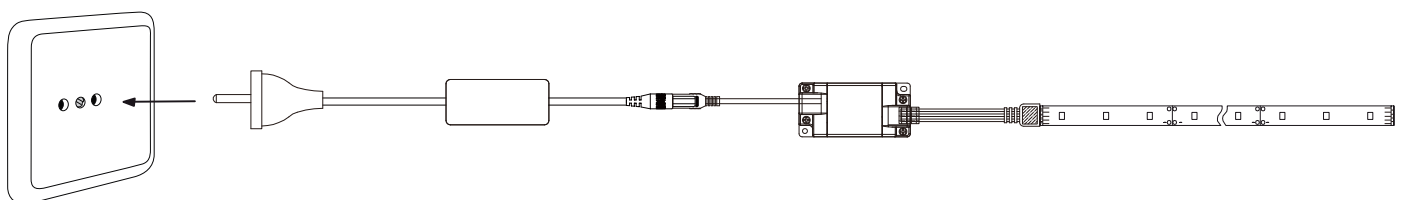
✓

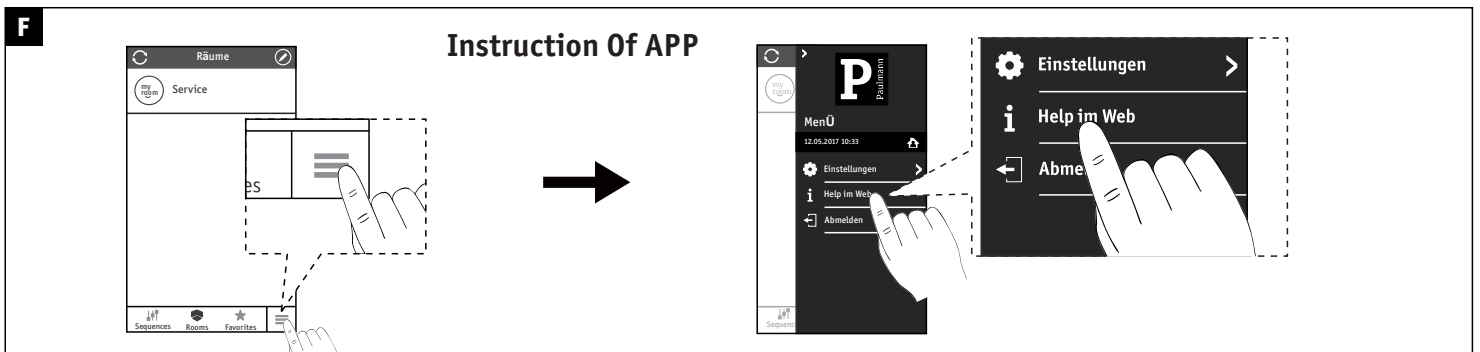
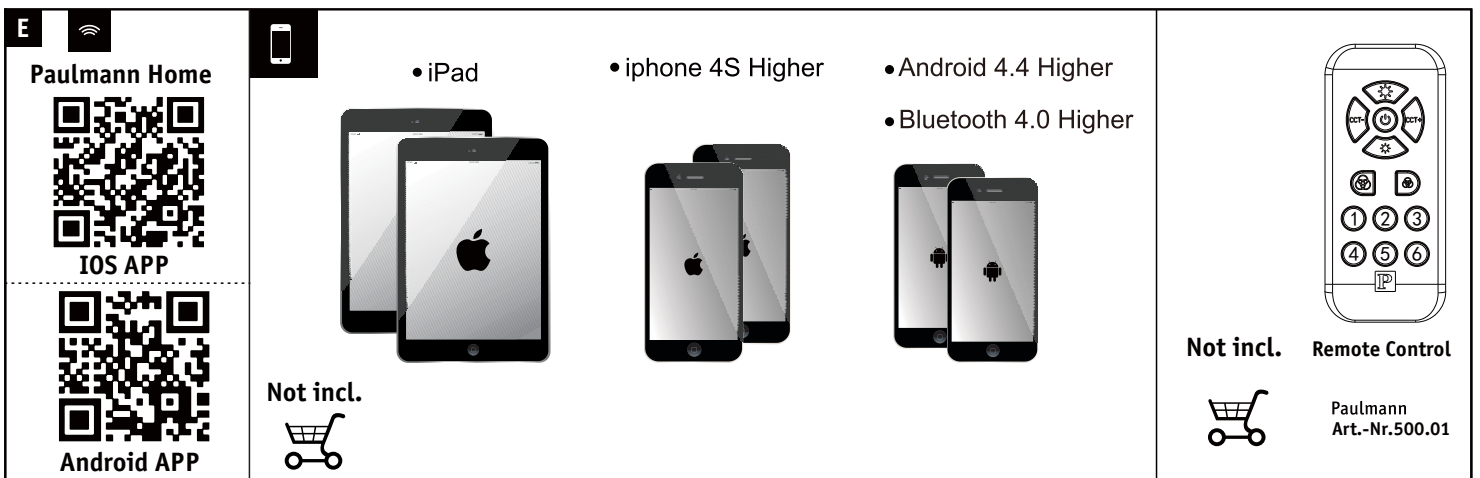
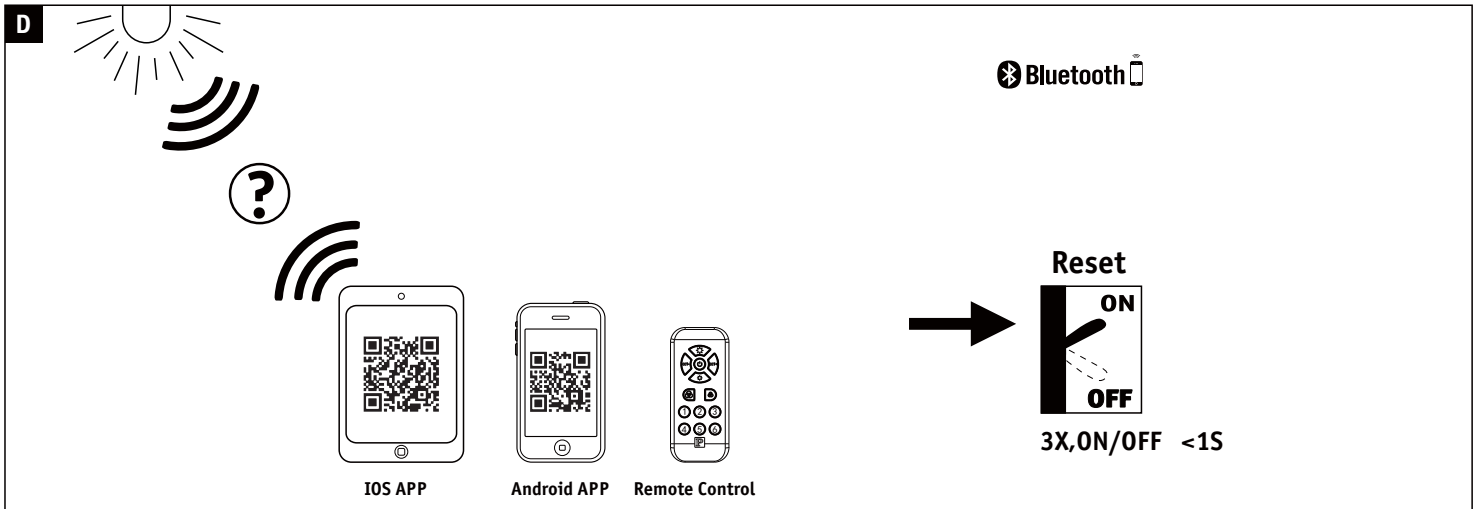
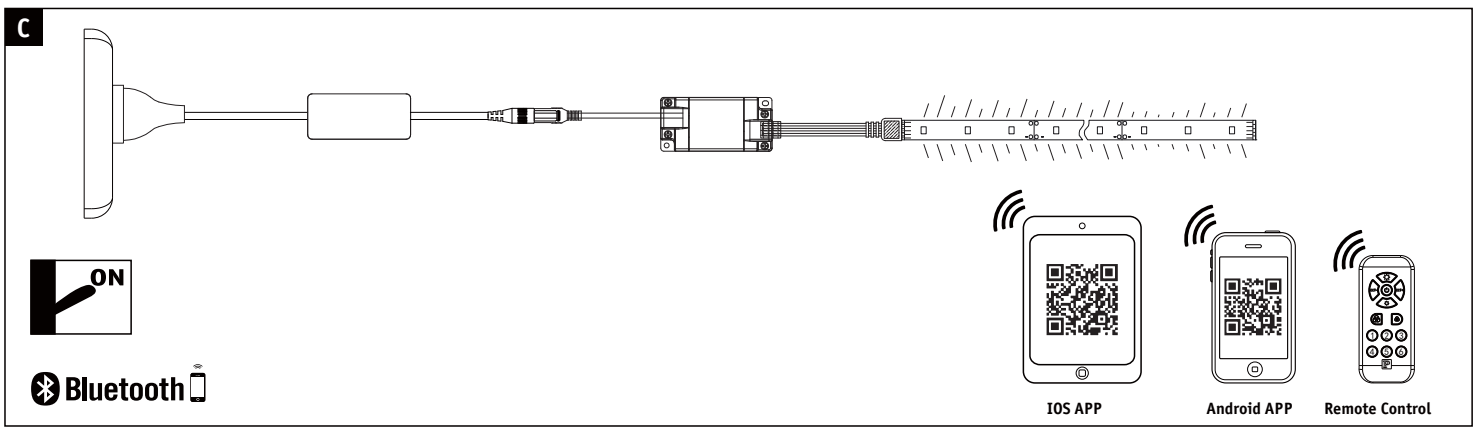
MaxLED RGBW

✗



B





Hiermit erklärt Paulmann Licht, dass der Funkanlagentyp Art.-Nr: 500.03 Richtlinie 2014/53/EU entspricht. Der vollständige Text der EU-Konformitätserklärung ist unter der folgenden Internetadresse verfügbar: www.paulmann.de

Zugelassen für den Betrieb in allen Ländern der EU / Approved for operating in all European countries

CE: Konform mit / in accordance with / conformément a 2014/30/EU, 2014/53/EU <http://www.paulmann.com/de/de/b2b-haendler-log-in.html>

Funk-Frequenz 2,4 GHz - 2,4835 GHz. Abgestrahlte Energie 10mW



doesn't apply for the geographical area within a radius of 20km from the centre on "Ny Alesund"